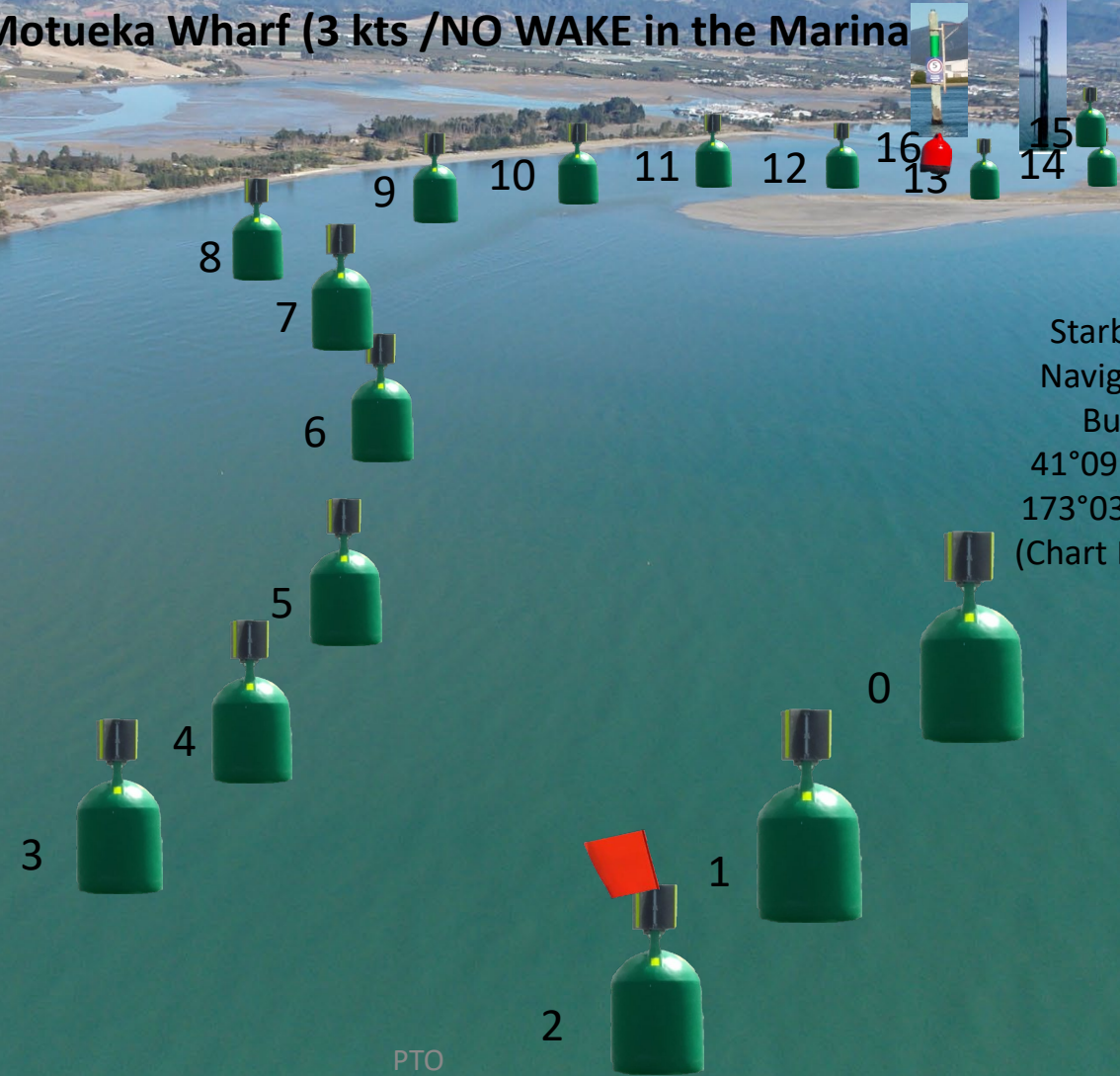


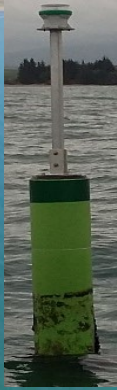
# 1. High tide

V41. Local knowledge Motueka channel @ high tide.  
Keep channel markers (except the red Port buoy (#16)) to Starboard  
(the right side of your boat) when inbound,  
buoys 0-16, (valid 06<sup>th</sup> Dec 2022), inbound vessel max speed 15 Knots  
(kts) until 5 knots abeam the Starboard lateral pile closest to the  
Motueka Wharf (3 kts /NO WAKE in the Marina

~↗  
North



Starboard  
Navigation  
Buoy  
41°09.028 S  
173°03.142 E  
(Chart NZ614)



# 2. Low tide

Starboard  
Navigation  
Buoy  
41°09.028 S  
173°03.142 E  
(Chart 614)



Buoy 1, (marks the sand bar at the entrance, min depth may be ~0.5 meters @ low tide (~3-4 meters max depth at high tide))

Life Jackets must be worn when crossing the  
bar!!

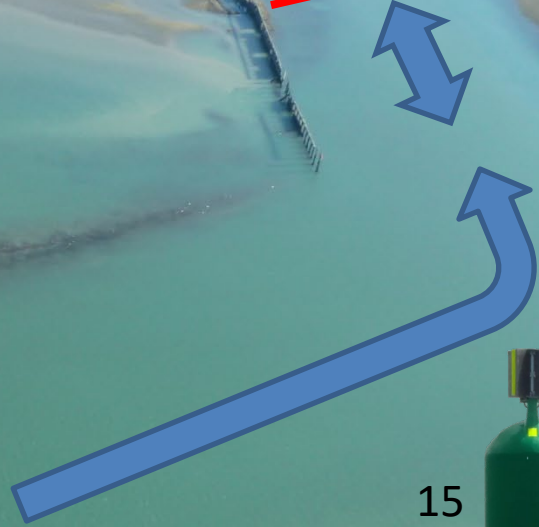
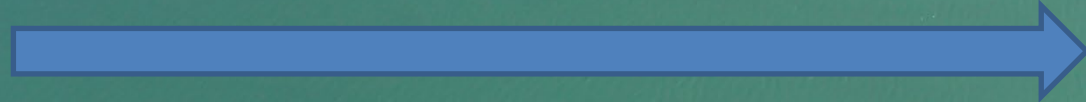
# 3. Inner channel @ low tide



5 kts

16  (sand/ cobble bank!)

15 Kts (Knots) boat speed



13 

14 

15 

Inner Starboard Pile marks 5 knot zone!

# 4. Motueka Marina, 5 knot and 3 knot speed areas.

## No Wake!

(Caution! – 5 knot buoy with Red “Port” top marker at the marina entrance marks a sandbar, (keep close to the 3 orange buoys).

