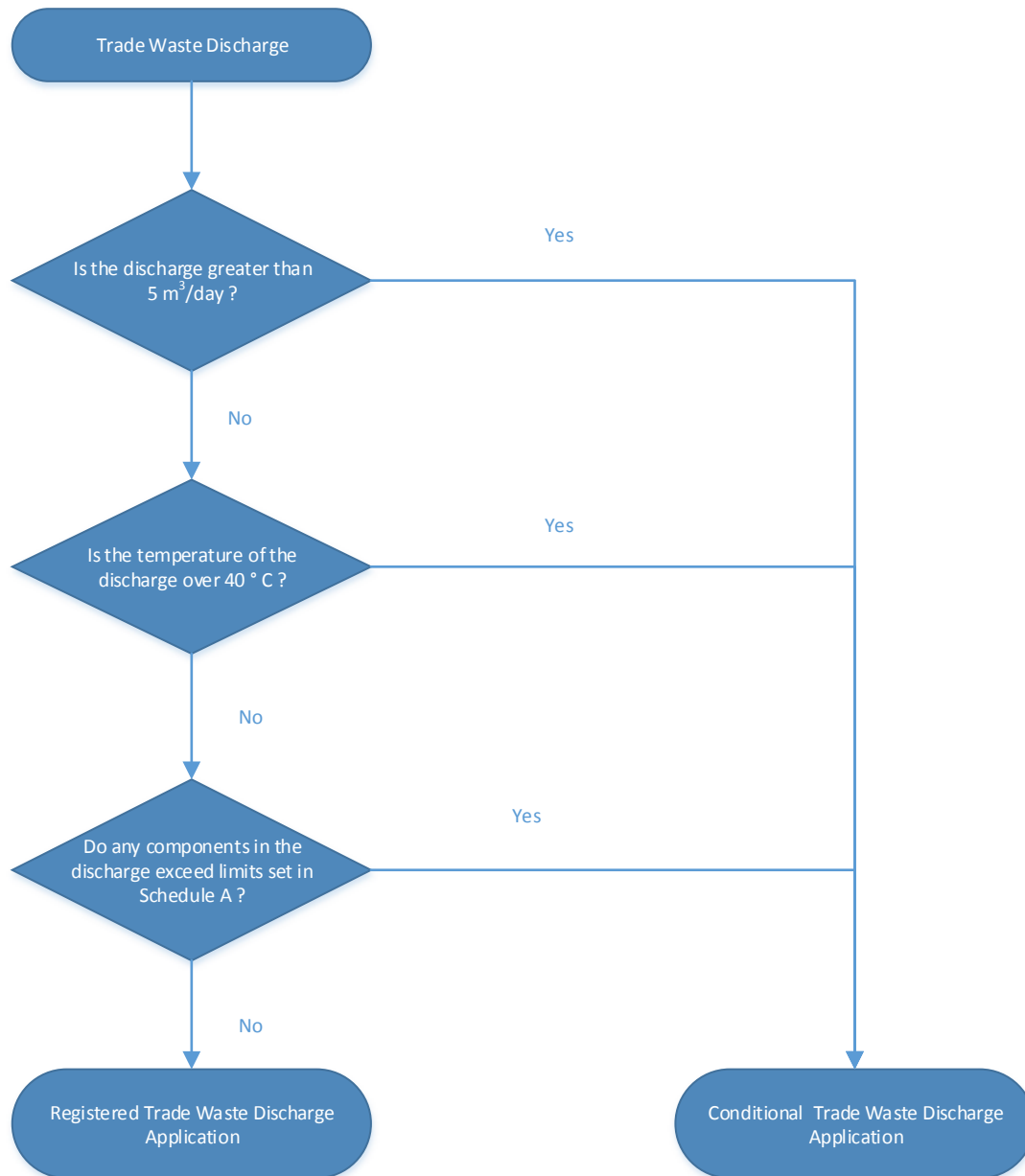
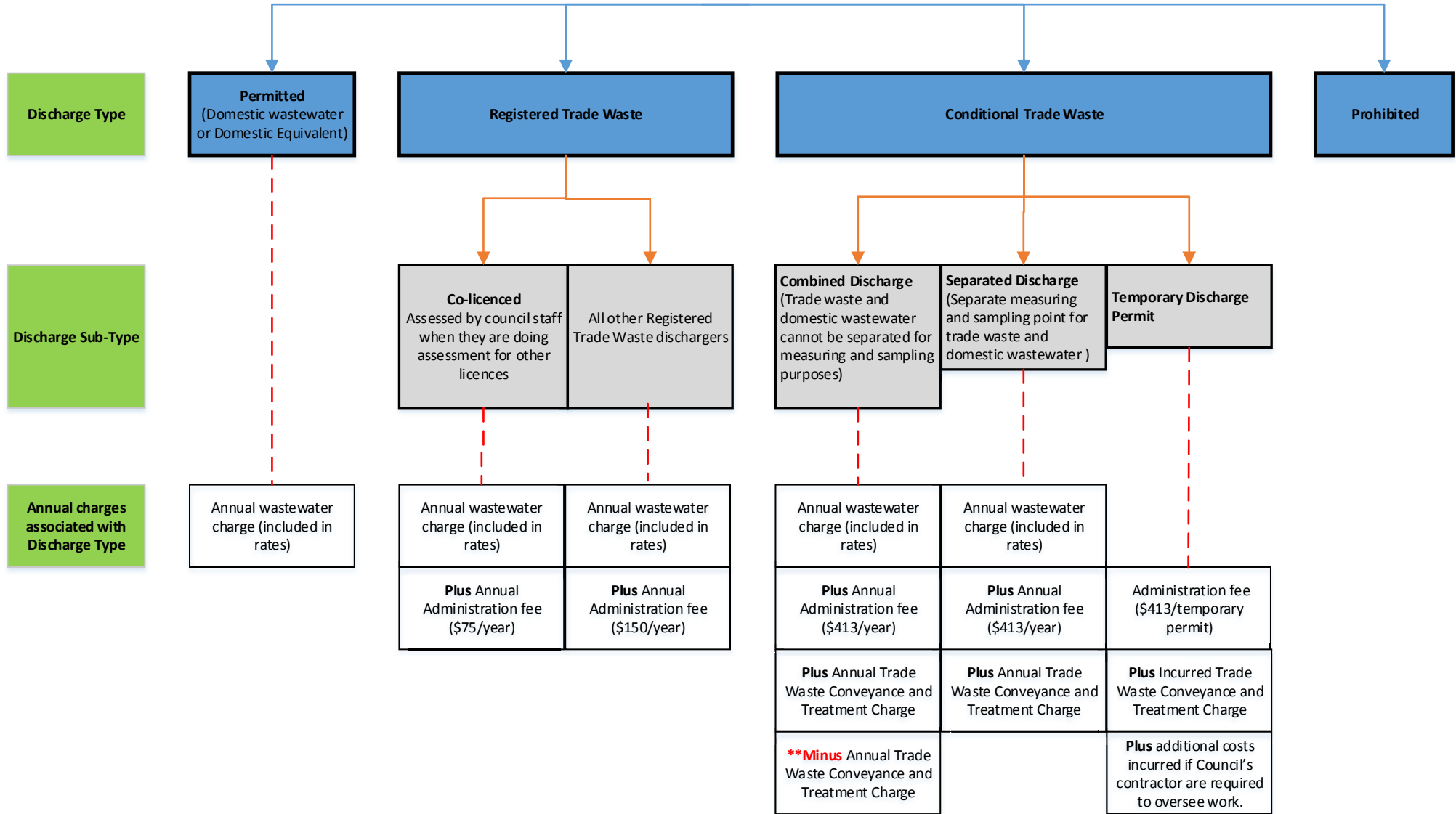


Discharge Type Assessment Process



A wastewater system has the following user (discharge) type



** in a combined discharge, the point of flow measurement and sampling includes both the domestic and trade waste components of the wastewater. The wastewater is sampled and analysed to determine the Trade Waste Conveyance and Treatment charge. As the domestic component is already charged for via the annual wastewater charge, to prevent double charging, the annual wastewater charge is subtracted from the conveyance and treatment charge.